

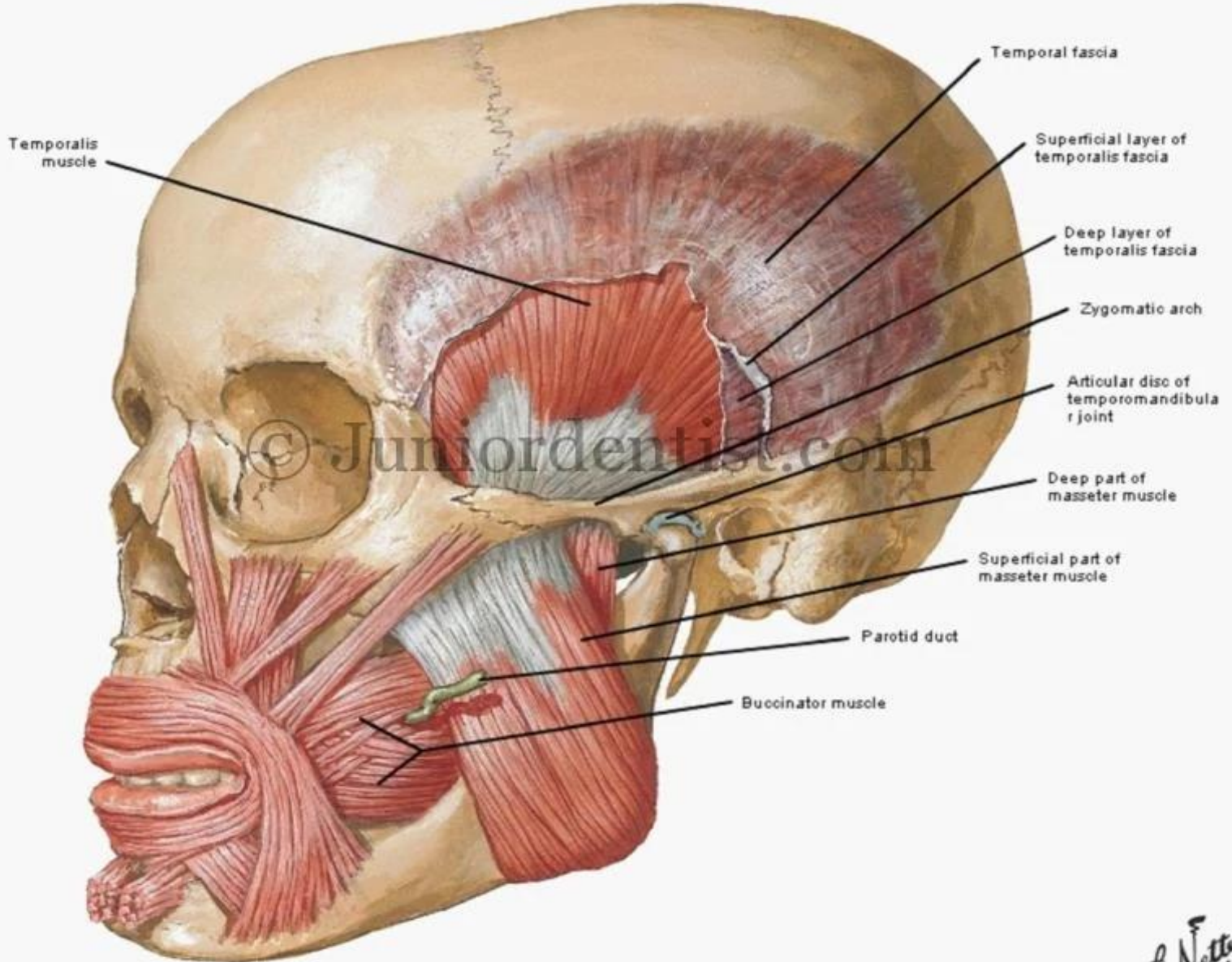
A scenic mountain landscape featuring a waterfall cascading down a dark, rocky cliff on the left. The foreground is filled with a dense field of colorful flowers, including white daisies, red and yellow blossoms, and green foliage. In the background, majestic mountains rise under a clear blue sky, with some peaks covered in snow or light-colored rock. The overall scene is bright and vibrant.

***Infratempo
ral fossa***

- ***Infratemporal fossa:***
- An irregular, postmaxillary space, it communicates with the temporal fossa from in between the zygomatic arch and lower temple. Medially **its roof** is the infratemporal surface of the sphenoid's greater wing and part of the temporal squama.
- ***Land mark:***
- ***Below the inferior temporal crest***

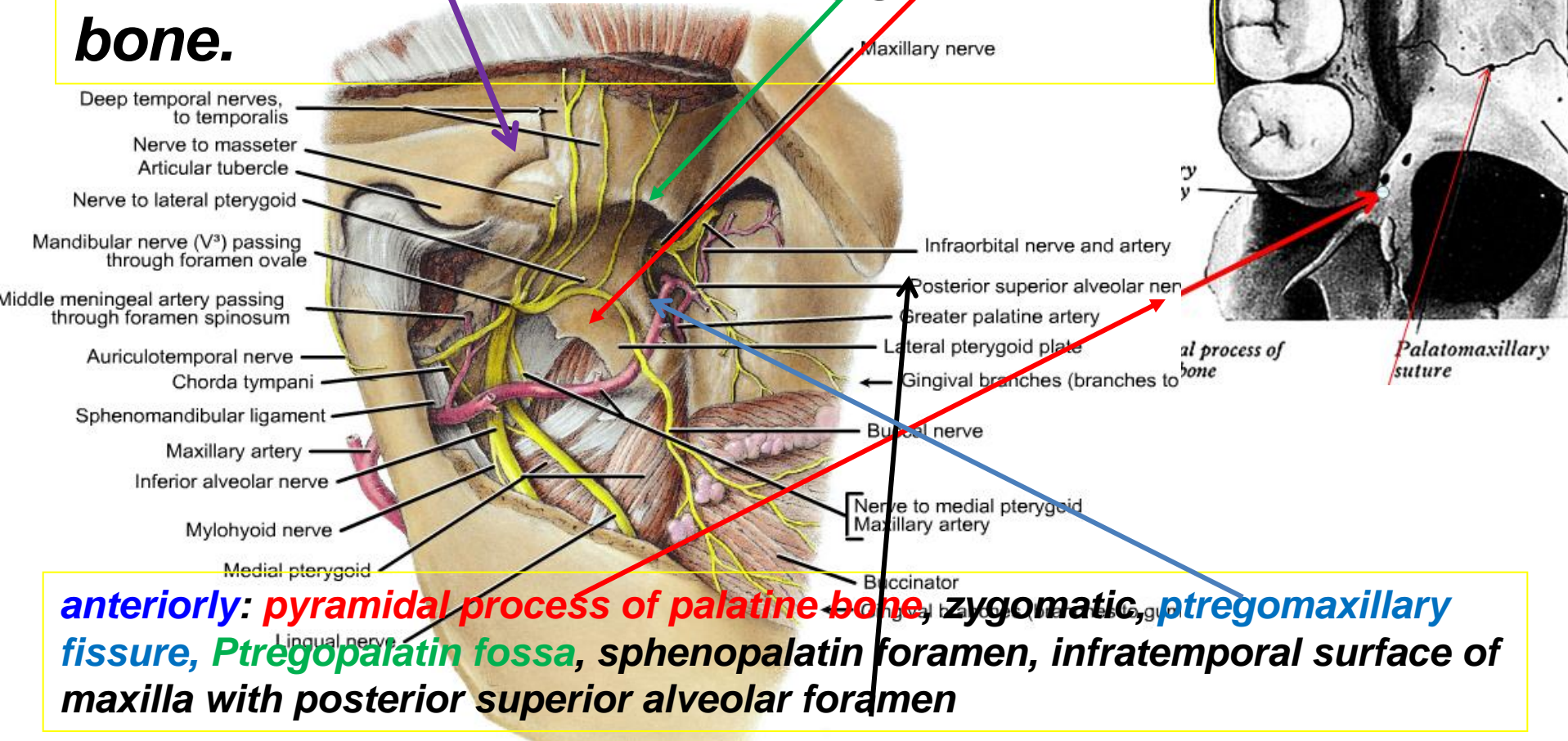
Muscles Involved in Mastication

Lateral View



Boundaries : **medial wall**: lateral pterygoid plate,
roof: foramen ovale, foramen spinosum, infra temporal crests,

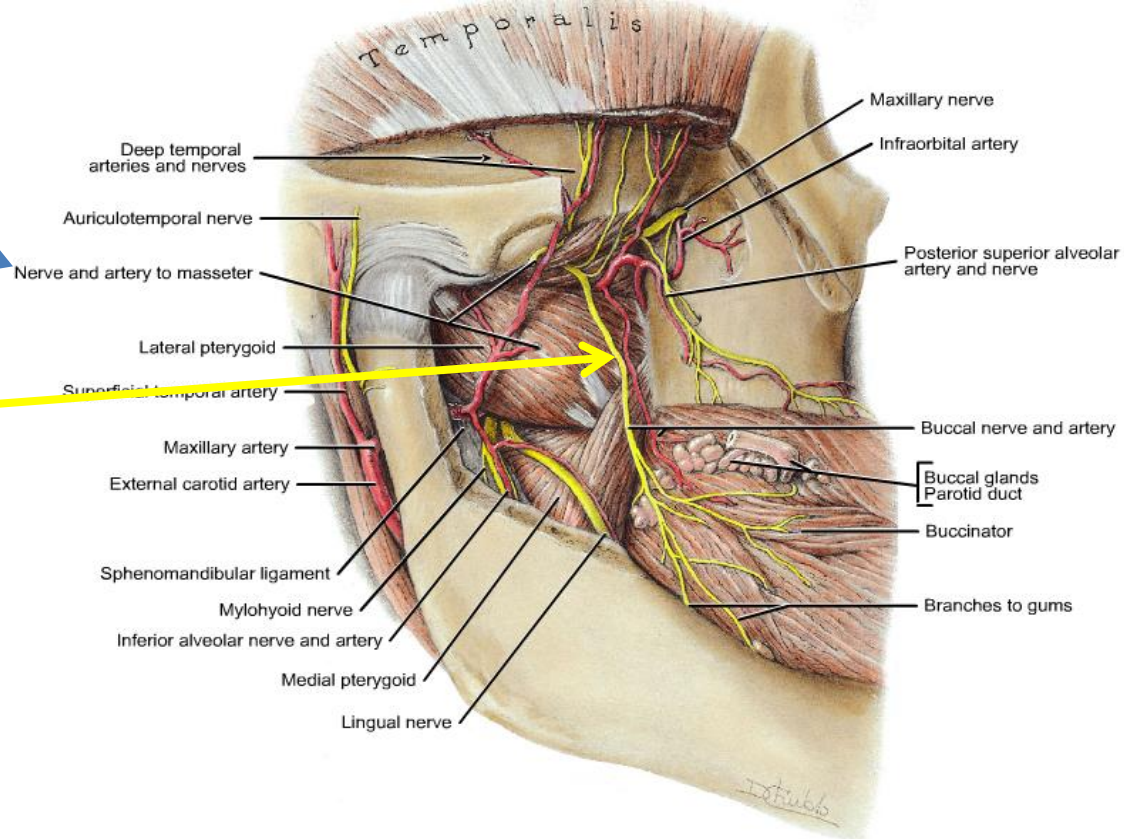
. Lateral wall: ramus of mandible and zygomatic process of temporal bone and temporal process of zygomatic bone.



anteriorly: **pyramidal process of palatine bone, zygomatic, pterygomaxillary fissure, Pterygopalatin fossa, sphenopalatin foramen, infratemporal surface of maxilla with posterior superior alveolar foramen**

Contains of in.t.f.

- ® **lateral pterygoid m.,**
- ® **Branches of the mandibular nerve,**
- ® **otic ganglia,**
- ® **chorda tympani n.,**
- ® **maxillary artery,**
- ® **pterygoid venous plexus.**

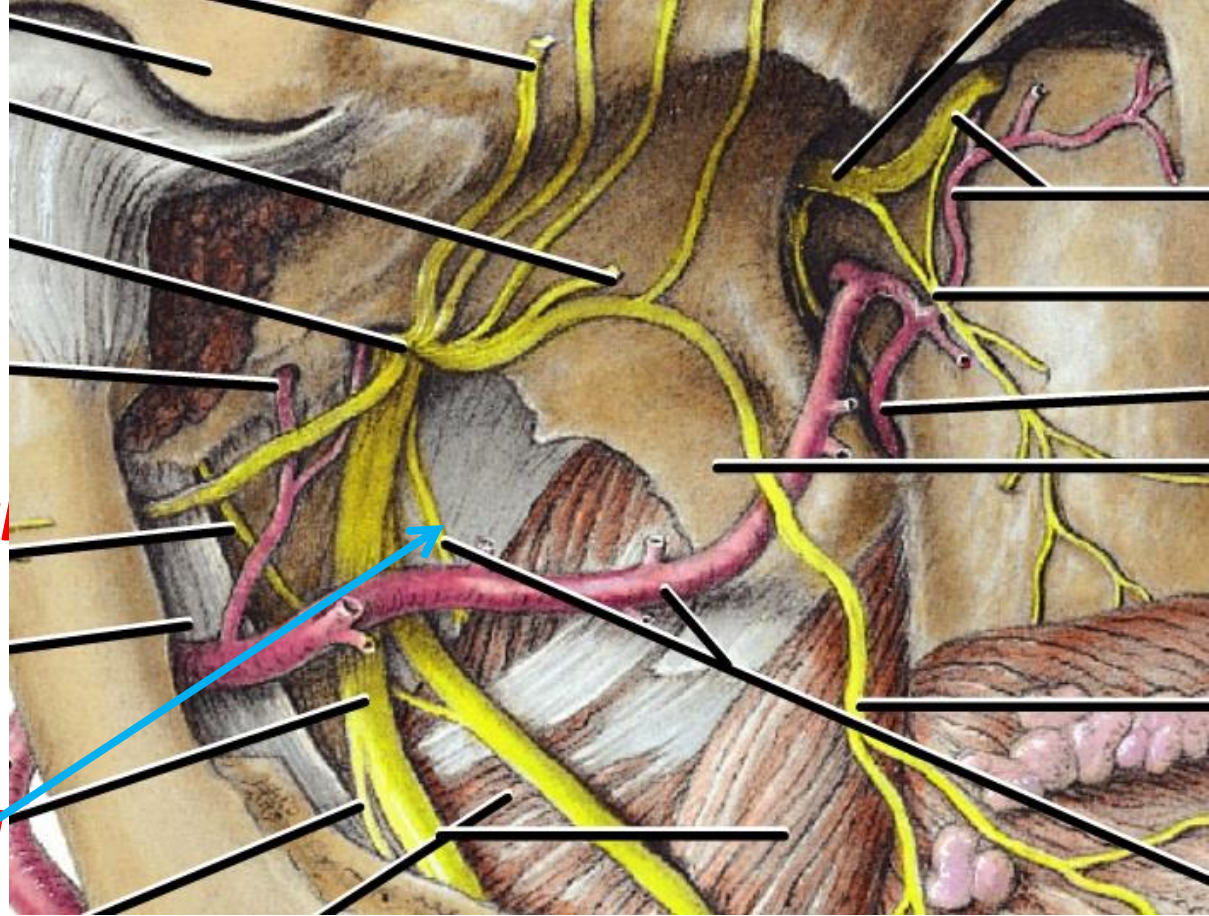


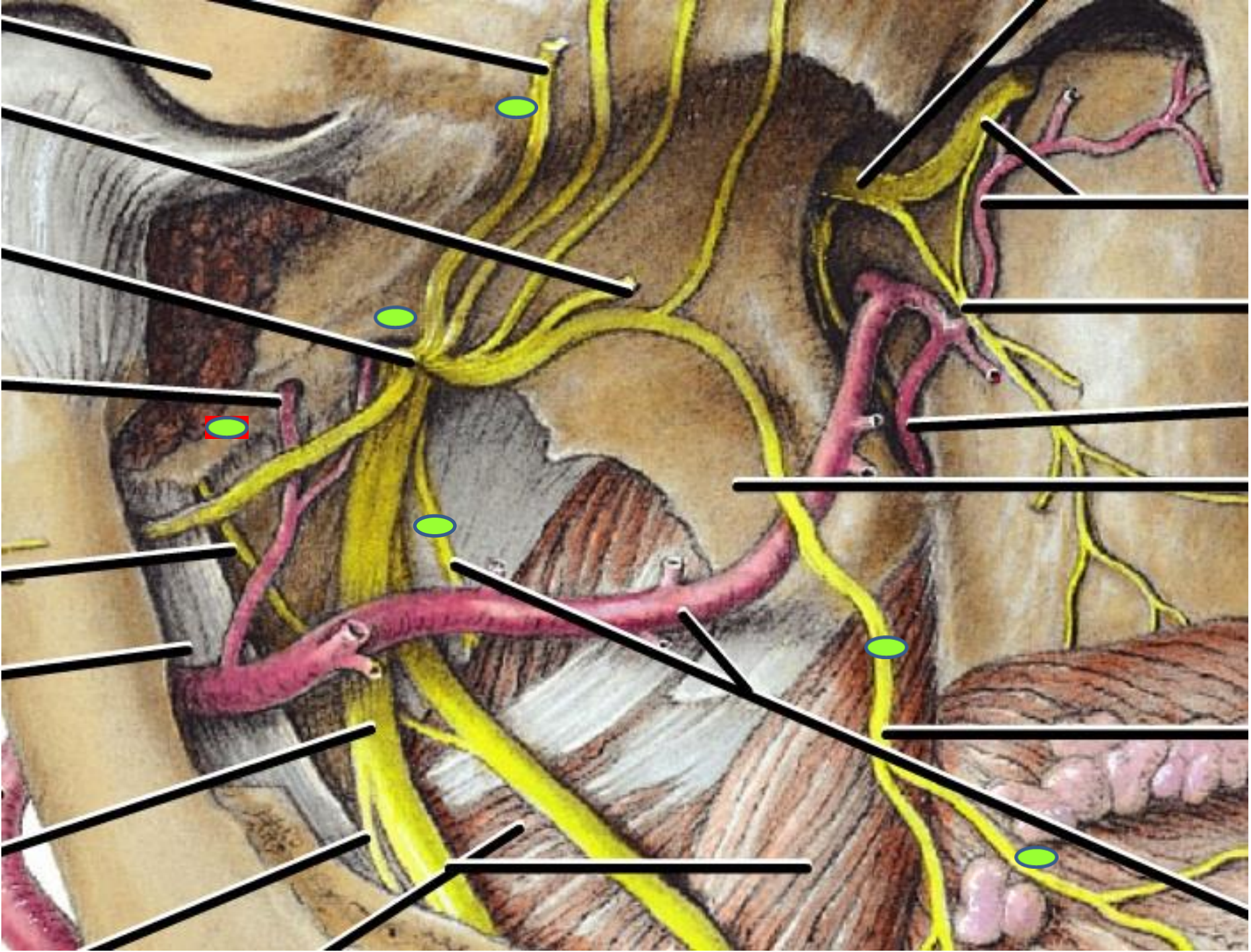
Behind, below and laterally the fossa is open.

- **® Mandibular nerve:**
- **- 2 branches from trunk :**

A- meningeal branch re inter the foramen ovale,

B- branch to medial pterygoid (supply tensor tympani & tensor veli palatine).





-[®] **Anterior division:**

***buccal (sensory to buccal mucosa),**

***masseteric,**

***2 deep temporal (motor to temporalis m.), &**

***to lateral pterygoid m.**

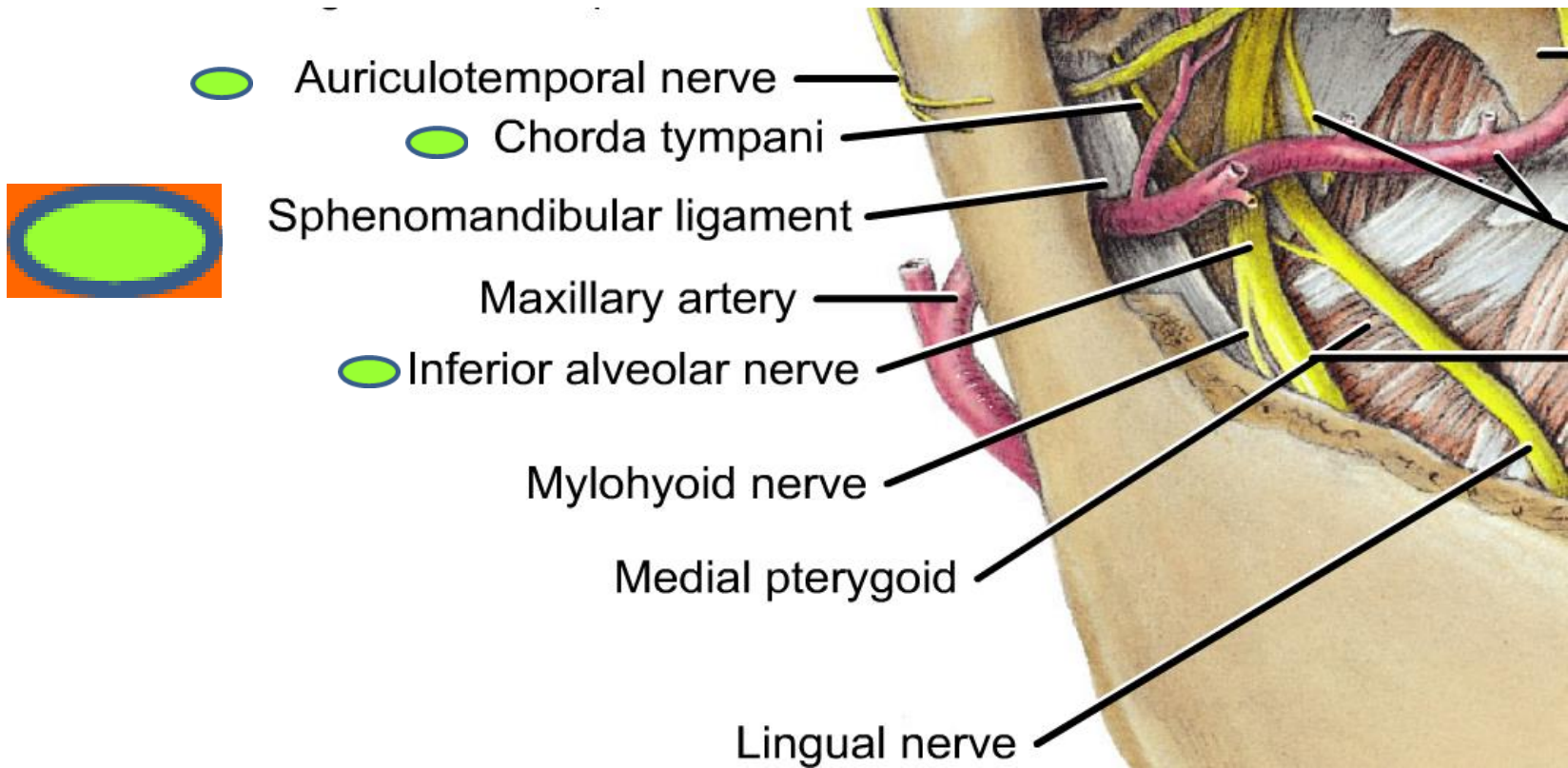
- Deep temporal nerves, to temporalis
- Nerve to masseter Articular tubercle
- Nerve to lateral pterygoid
- Mandibular nerve (V³) passing through foramen ovale
- The meningeal artery passing through foramen spinosum



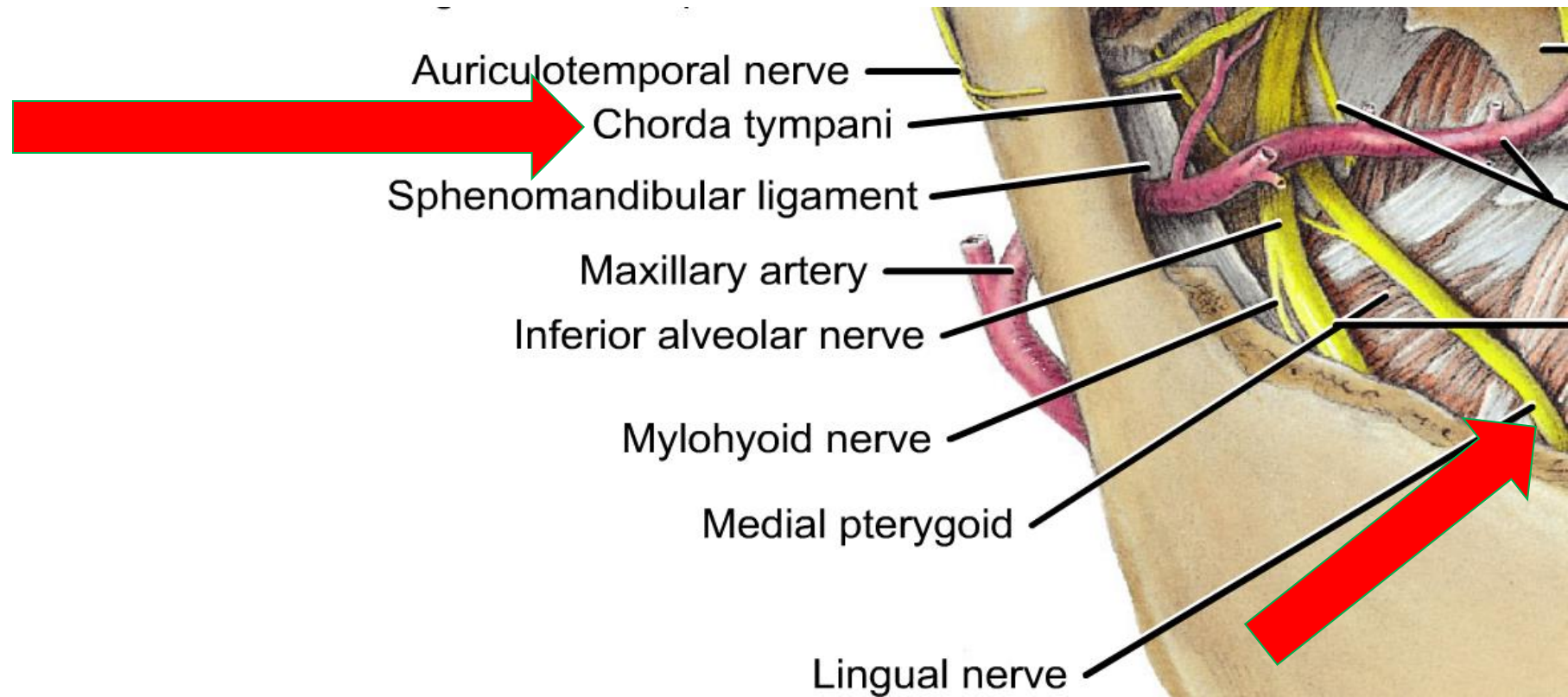
® **posterior division :**

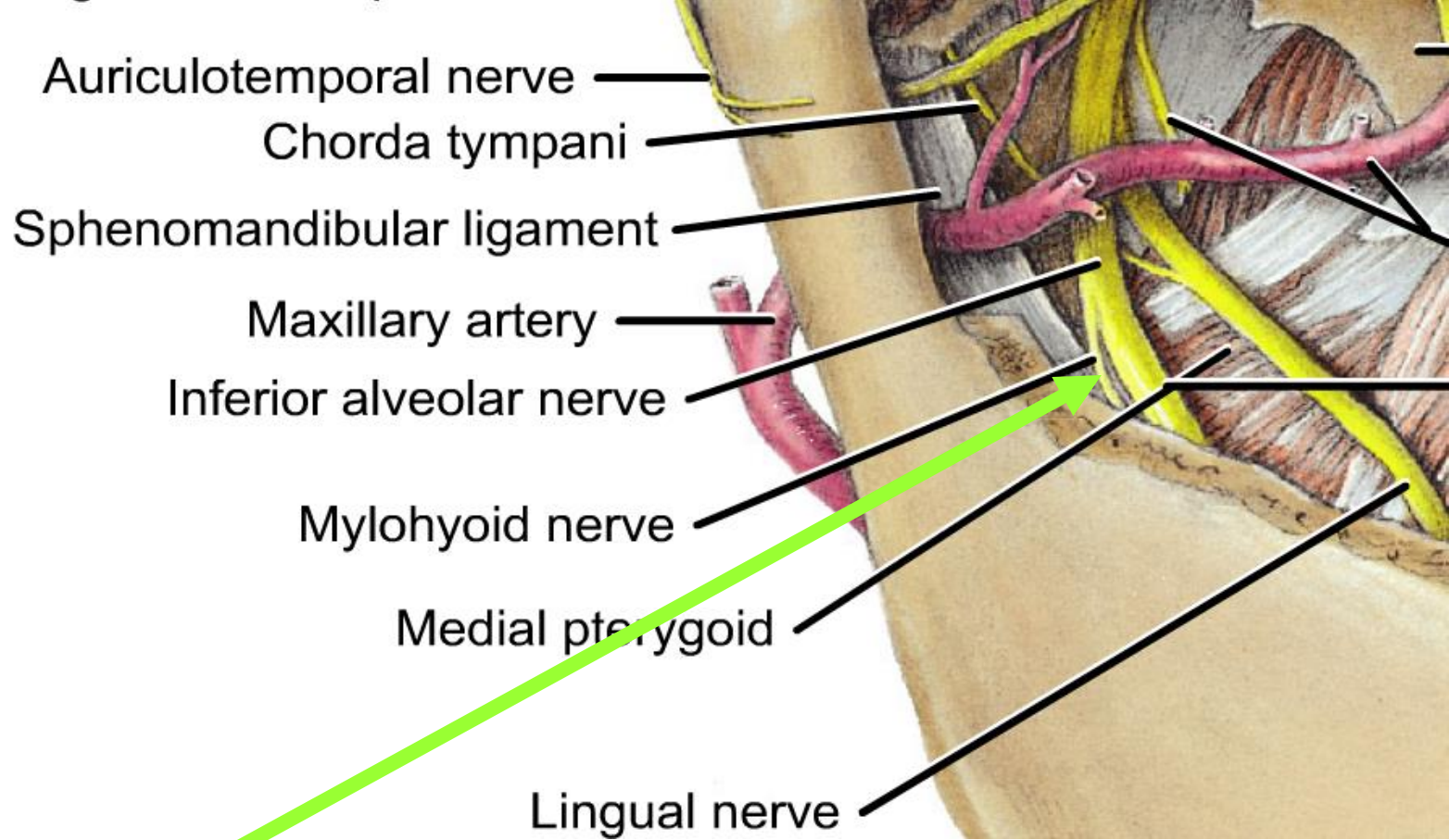
inferior alveolar nerve (at lateral surface of Sphenomandibular ligament).

*** auriculotemporal nerve (2 root embrace the middle meningeal artery) behind Tempromandibular joint (sensory to auricle, meatus, tympanic membrane, parotid, and skin of scalp).**

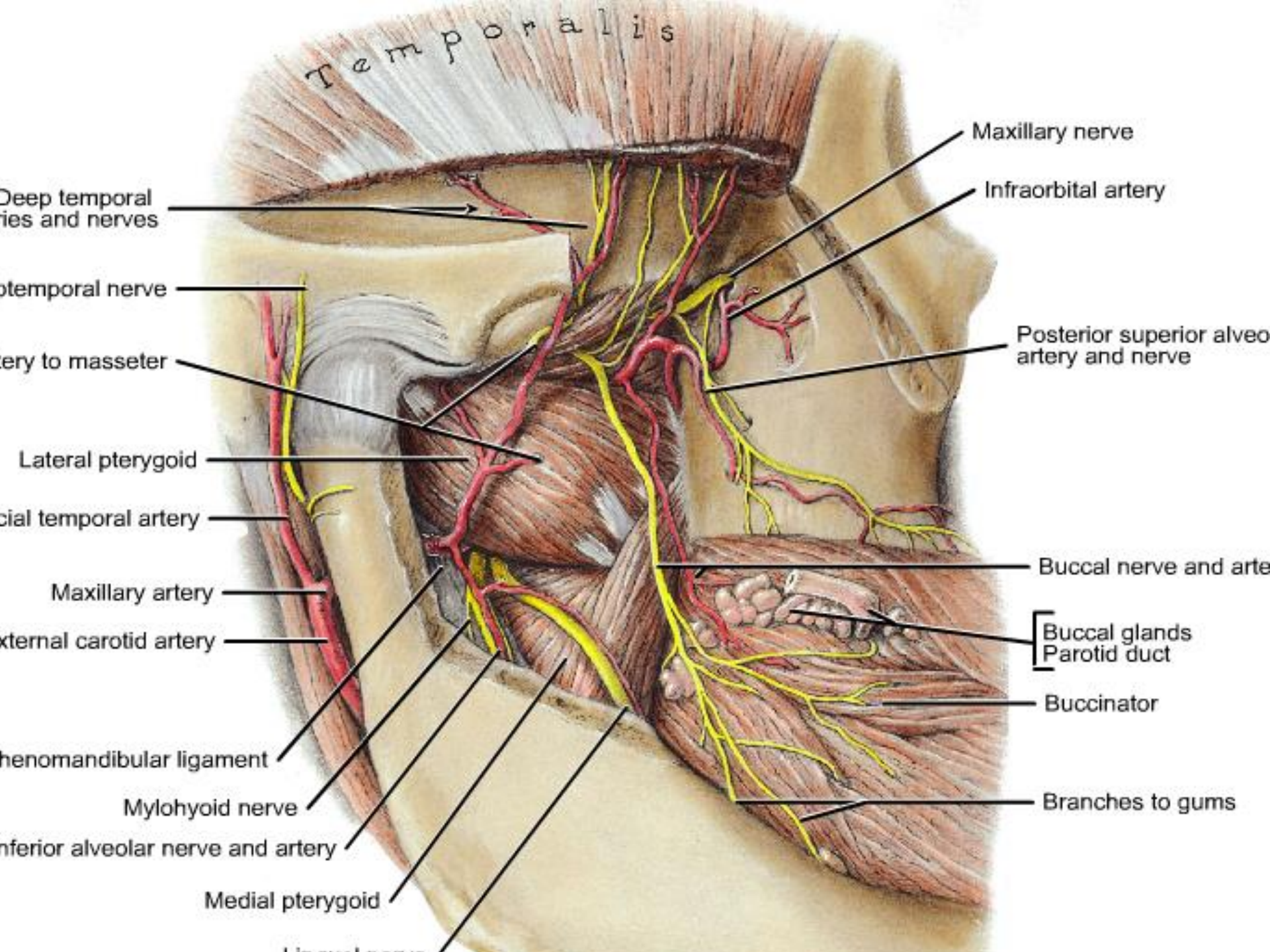


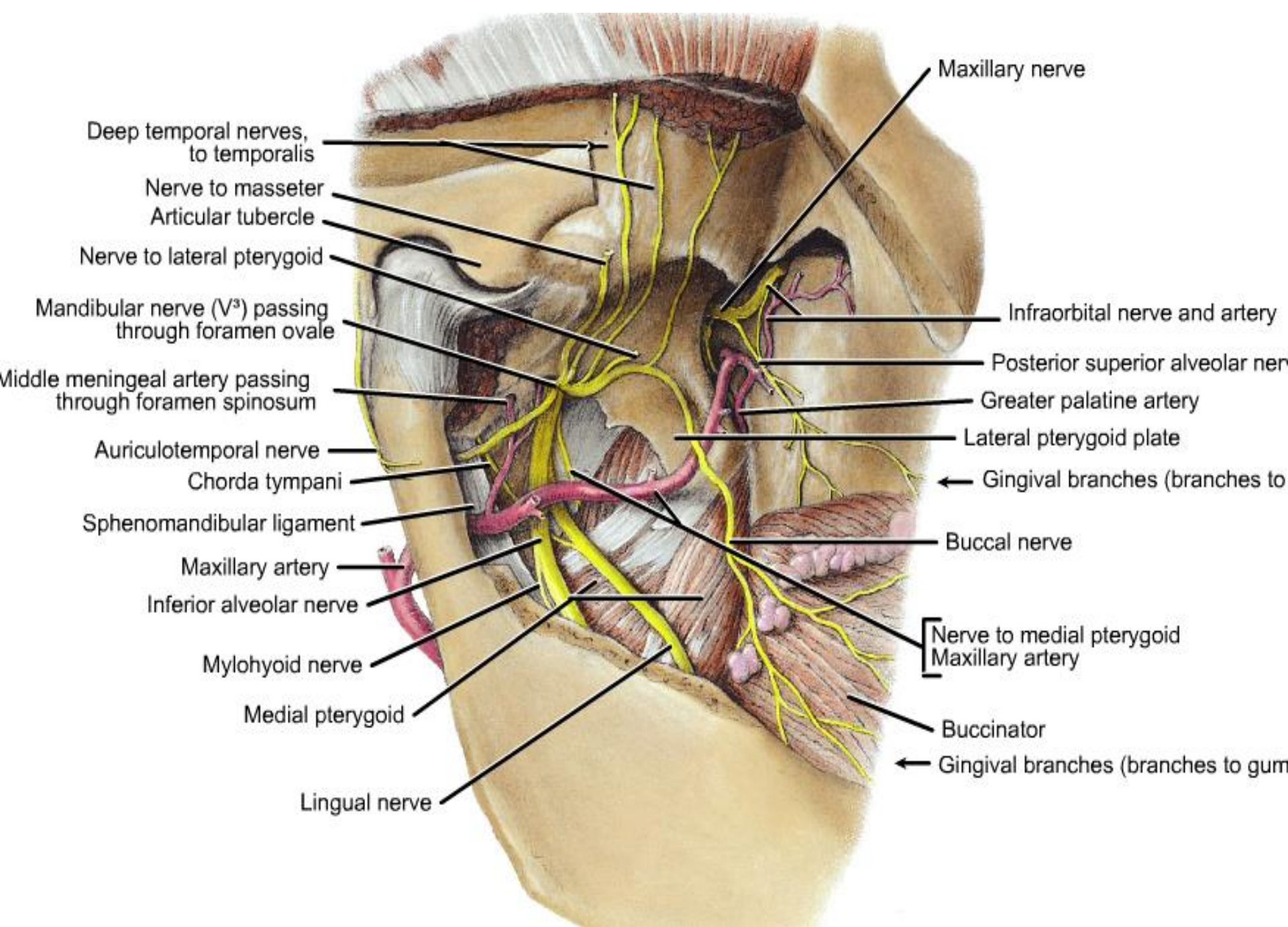
*** *Lingual nerve: below lower border of lateral pterygoid m. receive br. from facial n. (chorda tympani nerve). Join inferior alveolar n. then passes between mandible and hyoglossus muscle.,***





- ***® Mylohyoid nerve: br. Of inferior alveolar nerve above mandibular foramen***





Maxillary nerve

Deep temporal nerves,
to temporalis

Nerve to masseter
Articular tubercle

Nerve to lateral pterygoid

Mandibular nerve (V²) passing
through foramen ovale

Middle meningeal artery passing
through foramen spinosum

Auriculotemporal nerve

Chorda tympani

Sphenomandibular ligament

Maxillary artery

Inferior alveolar nerve

Mylohyoid nerve

Medial pterygoid

Lingual nerve

Infraorbital nerve and artery

Posterior superior alveolar nerve

Greater palatine artery

Lateral pterygoid plate

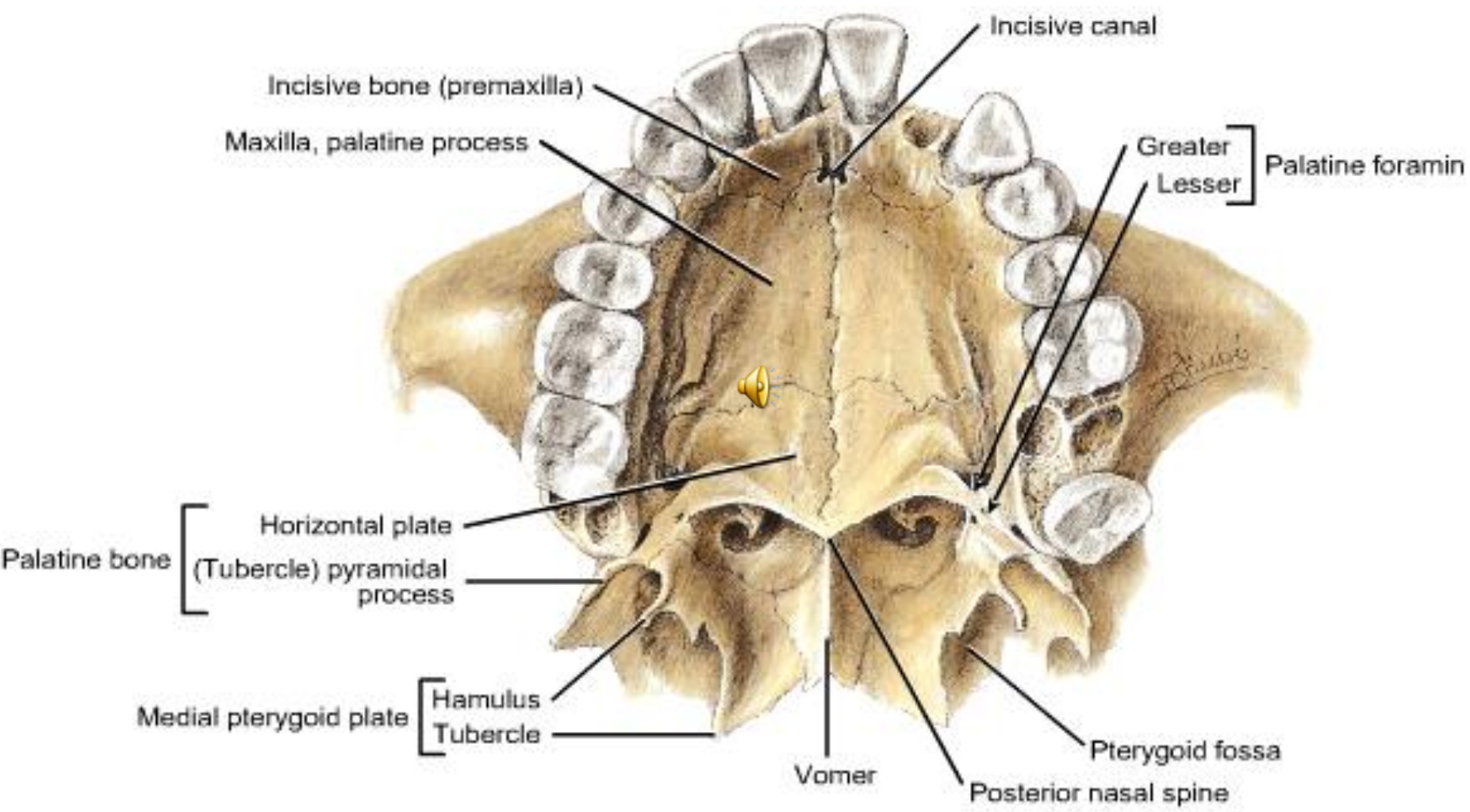
← Gingival branches (branches to gum)

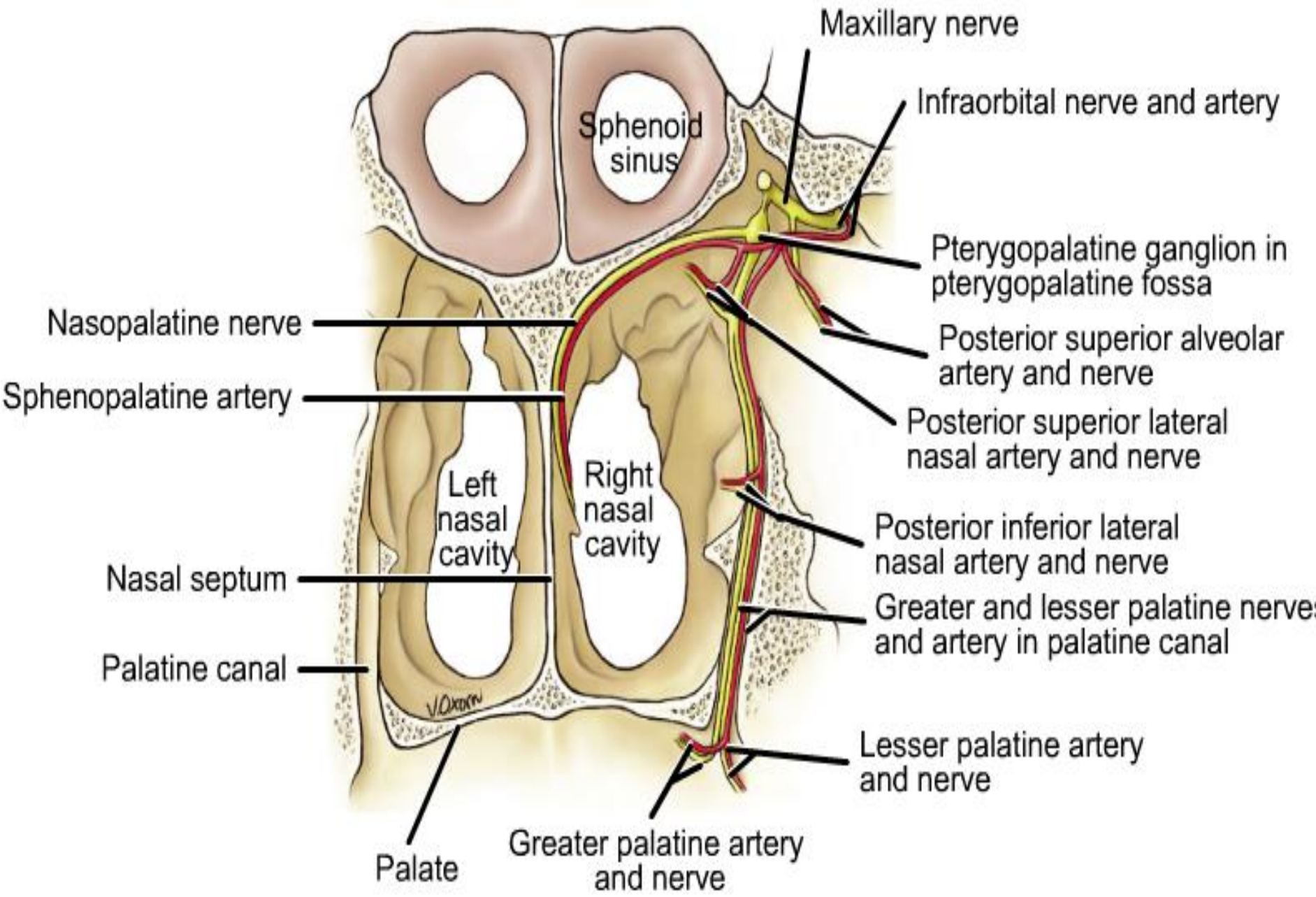
Buccal nerve

Nerve to medial pterygoid
Maxillary artery

Buccinator

← Gingival branches (branches to gum)

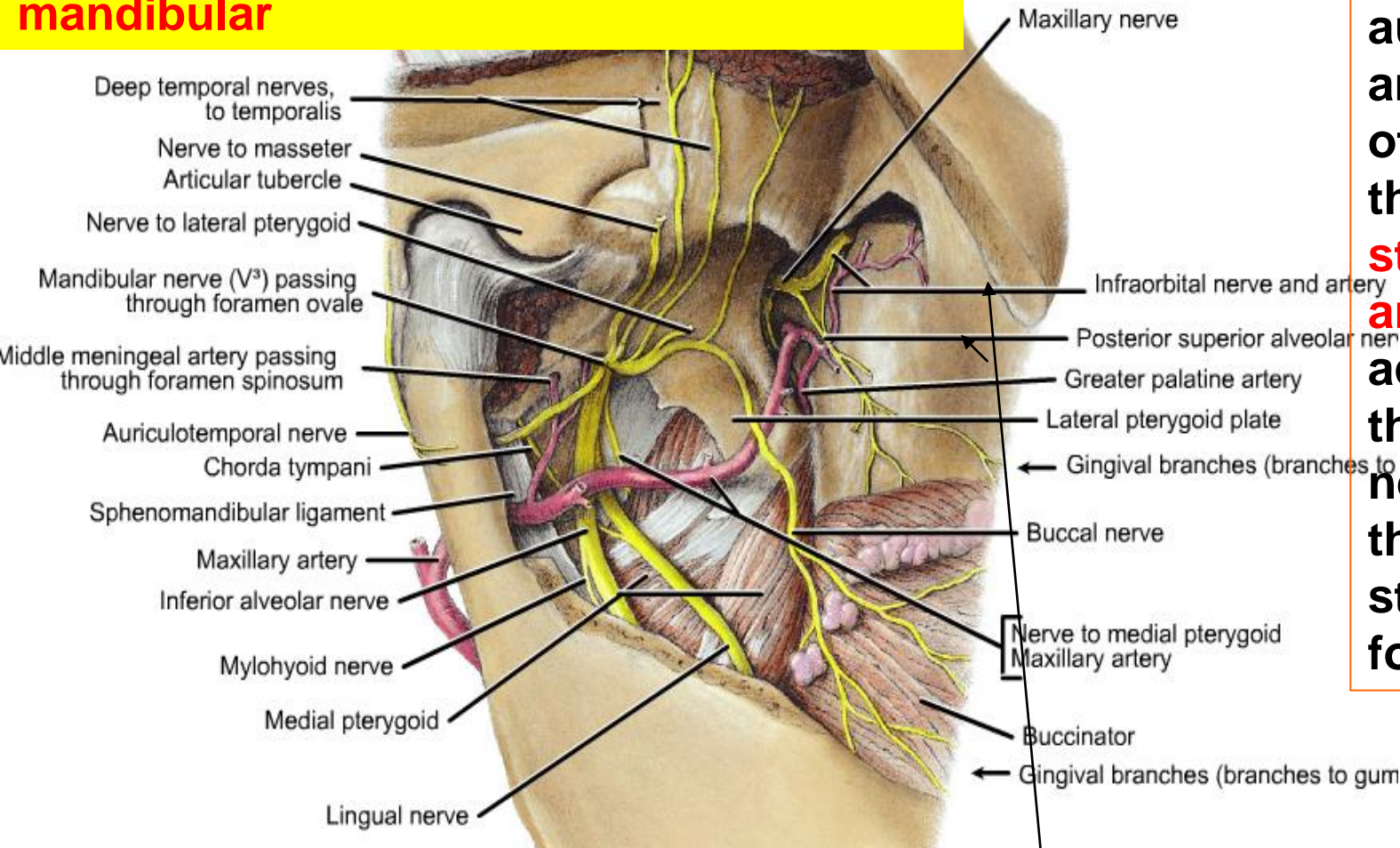






•The articular disc attaches to the neck of the mandible medially and laterally; part of the lateral pterygoid is inserted into the anterior aspect of the disc;

sensory and motor branches of the mandibular



•The posterior auricular artery gives off a branch, the **stylomastoid artery**, which accompanies the **facial nerve** through the **stylomastoid foramen**;

•maxillary artery, divided :alveolar arteries; to the muscles of the region; and infraorbital and posterior superior alveolar arteries

